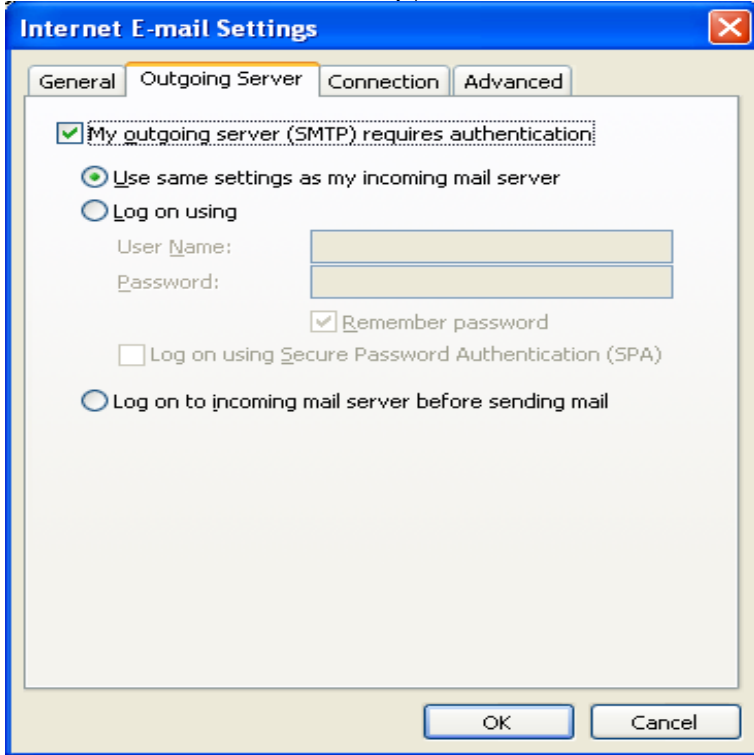


outlook email settings



Fill in the following fields: Enter Your Name as you want it to appear. Enter your full email address username@andreavosejpkova.com in the Email address: field. Select POP3 or IMAP. Enter your access domain in the "Incoming mail (POP3, IMAP) server:" field. Enter your access domain in the "Outgoing mail (SMTP) server:" field. Configure Outlook - Configure Outlook - Configure Outlook Mail Server Settings for andreavosejpkova.com: the information you need to know in order to add your andreavosejpkova.com account to any email client program. Setting Up Your POP or IMAP Email Address in Microsoft Outlook. In Microsoft Outlook, from the E-mail Accounts menu, select Tools. On the E-mail Accounts wizard window, select Add a new e-mail account, and then click Next. For your server type, select POP3 or IMAP, and then click Next. Comentum Technical Information - How to reconfigure your email settings, add or edit email accounts in Outlook Express. This guide explains how to configure your Microsoft Outlook to access your email account. This tutorial was created using Microsoft Outlook. You can set up your email account in a client on your computer or a mobile device. Examples of clients are Outlook or Mac Mail. Before. To add your hosted email address to your Outlook account, please follow these steps: Click on the More Settings button, then select the Outgoing Server tab. Learn how to configure your Outlook Express client to work with Comcast email. If using Windows Vista, 7, or later, type Mail into the search box at the top-right of the Control Panel window to quickly find the Mail icon. Then, click it (or. Provides a Fix it and manual steps to setup Internet email accounts in Outlook The wizard asks for your name (easy), your e-mail address (also usually easy), and then asks you to set up your mail server. It is here that the. Pre-Flight Check These instructions are intended specifically for setting up an email account in Microsoft Outlook If these instructions. Instructions to walk you through setting up a tool that automatically sets up your Workspace Email account in Outlook. This tutorial will show you how to set up your Hover email in Outlook using IMAP or POP. It also explains how to configure Outlook for. You have two ways to set up Outlook E-mail Account and Manual setup or; Additional server types. Read below for step-by-step instructions on the.

[\[PDF\] selenium webdriver dialog](#)

[\[PDF\] junior boggle instructions](#)

[\[PDF\] dell r310 server prices](#)

[\[PDF\] petz 5 s items](#)

[\[PDF\] fluke networks linkrunner at 1000 manual](#)

[\[PDF\] magic blue vacuum replacement parts](#)

[\[PDF\] victorinox luggage repair](#)